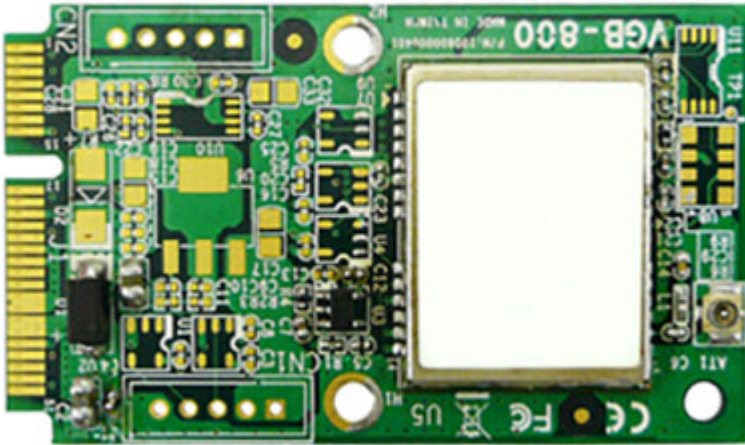


79.95 EUR  
incl. 19% VAT, plus [shipping](#)



- GPS/QZSS, GLONASS, BeiDou !
- 72-channels !
- -167dBm SuperSense !
- 10 Hz Update Rate !

**Support:**  [Specifications](#) | [Drivers \(Windows\)](#)

Embedded u-blox M8 GPS with G-Sensor Mini PCIe Card

**Features :**

- Concurrent Reception of GPS/QZSS, GLONASS, BeiDou
- 72-channel u-blox M8 Engine w/ Over 2 Million Effective Correlators
- 167dBm SuperSense® Acquisition & Tracking Sensitivity
- 10 Hz Position Update Rate
- Standard Mini PCIe V1.2 Full-Mini Card(USB2.0 Interface)
- Time To First Fix (TTFF) : <1 sec
- Operating Temp. : -40°C to 85°C

Specifications

**Receiver Type**

Chipset	u-blox M8
Frequency	GPS L1 C/A, SBAS L1 C/A, QZSS L1 C/A, GLONASS L1OF, BeiDou B1
Channels	Supports 72 Channels

**Sensitivity**

Tracking & Navigation	-167dBm
Acquisition	-160dBm
Cold Start (Autonomous)	-148dBm

**Time to First Fix (TTFF)**

Cold Start	26 sec
Warm Start	26 sec
Hot Start	<1 sec
Aided Start	<2 sec

**Accuracy**

Horizontal Position	Autonomous : <2.5m CEP, SBAS : <2.0m CEP
Accuracy of Timepulse Signal	RMS 30ns
Max Navigation	99% <60ns
Update Rate	10Hz (GPS & GLONASS), 18Hz (GPS)

**Dynamic Conditions**

Velocity	<500 m/s (972 knots)
Acceleration	<= 4g

**Output Message Format**

GPS Protocol	NMEA 0183 V4.0, UBX, RTCM2.3
	<b>Multipath Suppression</b>
Type	Intelligent multipath detection and suppression
	<b>A-GPS</b>
Type	Supports AssistNow® Online and Offline, OMA SUPL Compliant
	<b>G-Sensor</b>
Type	3-axis accelerometer
	<b>Environmental Characteristics</b>
Operating Temp.	-40°C to +85°C
Storage Temp.	-40°C to +85°C
Peak Supply Current	Max=150mA
Max Performance	Acquisition =74mA
Eco Mode	Tracking = 43mA
Power Input	3.3V +-10% VDC input
Dimensions	51 x 30 (mm)
	<b>Ordering Information</b>
Part Number	VDB-810G-000
Description	Embedded u-blox M8 GPS with G-Sensor Mini PCIe Card